



HARROLD

2003

drastic plastic

CREDITS

history

These chairs were first designed as part of the celebration that was Glasgow 1999 Year of Architecture. I set up NICEHOUSE a contemporary furniture dealer with a showroom in Glasgow which held an ambition to deliver a chair with International standing utilising the best of Scottish design. This became achievable when the city backed my plans as far as they could during the lead up to the festival. My thanks to Bruce Wood and Dejan Sudjic for their support and backing to try.

The original chair was designed by **One Foot Taller** in response to a strategic brief from Nicehouse to have a universally appealing design fit for the 21st century. We had a seriously good commitment financially allowing us to make something in Plastic...but had little experience of delivering such a project,we also had no idea how success would be measured in the start-up. If we knew then what we know now we might never have tried to be innovative.

The first chair in 1998 was **CHASM**. The concept to rotationally mould a product was not new but from OFT's mind was the method of creating the form by dissecting a volume and rejoining to expose the interior. When CHASM was born it was much admired but not commercially viable since the chair height was unusually low. However a market demand slowly appeared.

The second chair was the **RAVINE**, which took longer than anticipated to make since we made incremental improvements to the strength of the legs and back. The result is more commercially minded but is a more realistic design to market. The third of the trio **CANYON** was a revelation by OFT and was definitely not immediately planned for by Nicehouse. However without fear of contradiction it has been arguably one of the more interesting pieces of chair design from the UK in 50 years. Possibly the most innovative in 100 years in Scotland.

Go and find a space for them. The designs were bought from the incumbent Nicehouse Contemp Furniture by myself personally in September 2001 and are available from me directly.

awards

1998 100% design / blueprint award
1999 Glasgow Collection
1999 Peugeot Award
1999 Millenium Status
2001 International Design Year Book

exhibitions

1998 100% design
1999 100% design
1999 Milan, Alterpoint
1999 Oct, CreativeBritain, Berlin
2000 lost & found
2000 Milan, Fierra
2001 NY British design. Stockholm
2001 100% DESIGN
2002 Designers Block Milan

press book

In Scotland

The Herald Oct 4th,1998, The Herald (again June 28th,99) The List (dec99 FC), The Scotland On Sunday. The Sunday Herald. The Drum

In the UK. You Magazine,Elle Decoration, Living Etc, Blueprint, Interiors for arch & designers, The Guardian Weekend Mag,Time Out,Design Week,Living ETC, Time Out (June 99), Theme Magazine (july 99),

European Intramuros (France) Masion Marie Claire (france), Elle Decoration (Germany) , Nuevo Estilo No256.(SPAIN),Frame, WOHN, Md magazine.Interni, DDN

USA Interior designer, Metropolitan Home, *surface. Metropolis.

Far East AXIS (Japan) Elle Decoration (japan)

Books ZOO number 4, Lost & Found. International Design Year Book 2001. Conran Octopus CHAIRS.

as seen on TV:

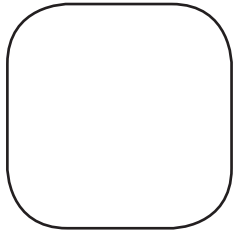
MTV UK,
UK Big Brother TV 2002



POLYETHYLENE

PLASTIC COLOURS

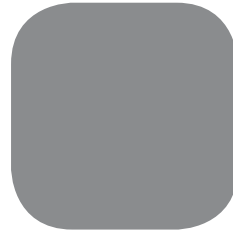
ANY TWO TONE COMBINATON AVAILABLE FOR ORDER | SPECIAL COLOURS +10 PIECES

**1201**

WHITE - BLANC
BIANCO - WEIB

**1207**

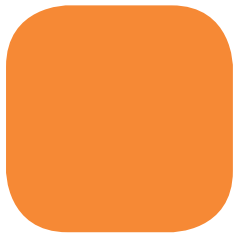
LIGHT GREY-GRIS CLAIR
GRIGIO CHIARO-HELLGRAU

**1210**

DARK GREY-GRIS FONCE
GRIGIO SCURO-DUNKELGRAU

**1204**

BLACK - NOIR
NERO-SCHWARZ

**1862**

ORANGE- ARANCIO

**1023**

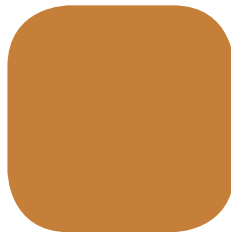
FUSCIA

**1055**

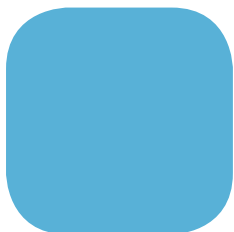
RED-ROUGE
ROSSO-ROT

**1025**

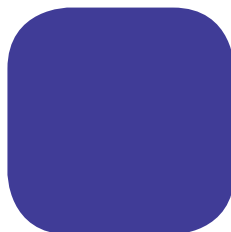
ACID GREEN-VERT ACIDE
VERDE ACIDO-SAUERGRUN

**1410**

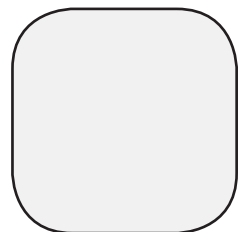
BRICK-

**1055**

MARINE BLUE-

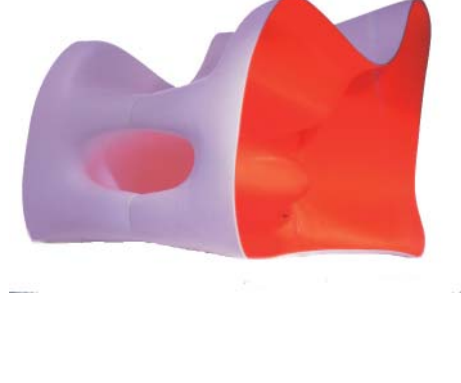
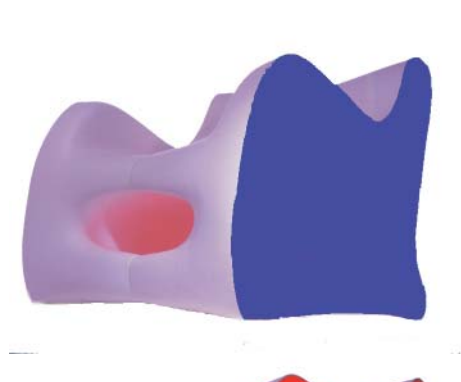
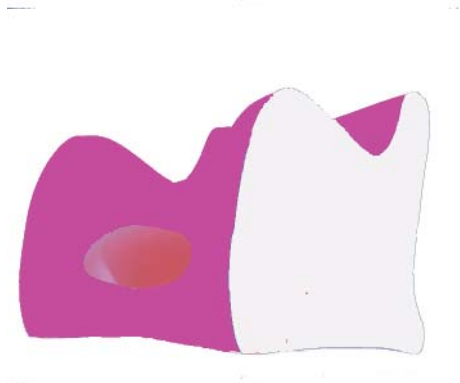
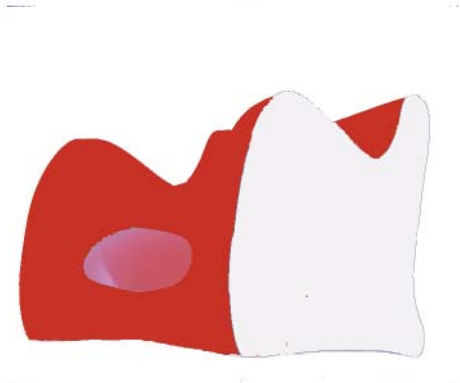
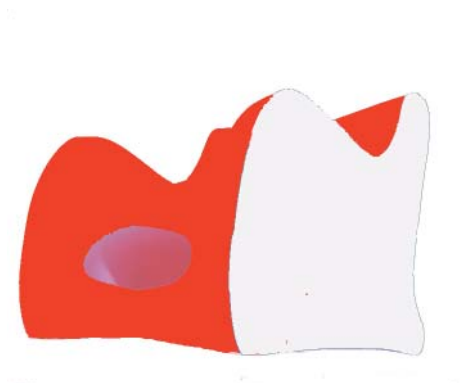
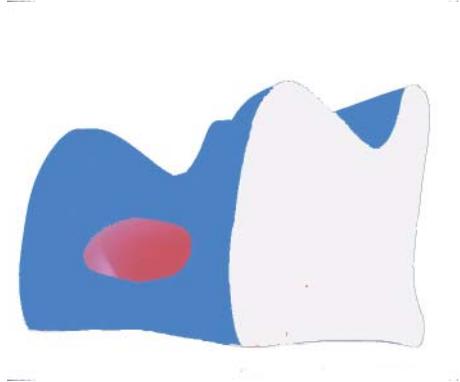
**1805**

BLUE-BLEU
BLUE - BLAU

**1000**

NATURAL NO PIGMENT-
OPAQUE

cleaning ployethelyne- degreaser in spray and damp cloth works best for engrained dirt. Wax furniture polish is an excellent coating for a fresh look.

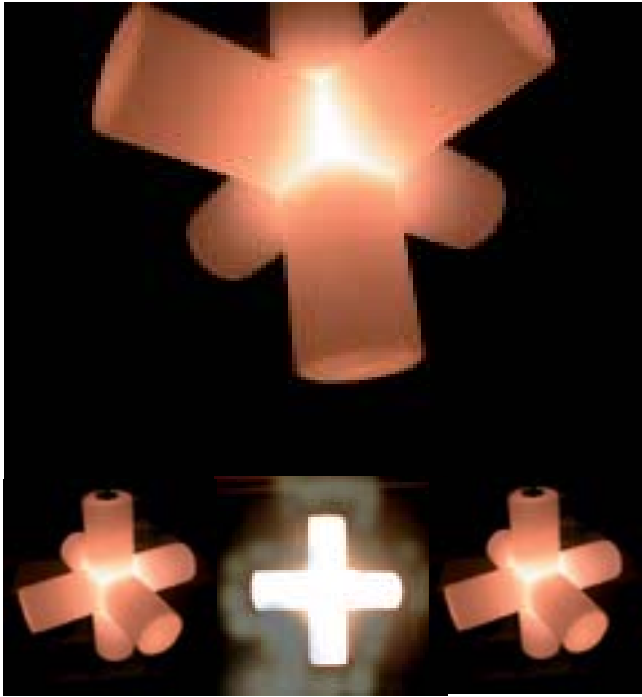


AVAILABLE
IN SINGLE
COLOURS
OR IN
TWO TONES

CANYON

by One Foot Taller 1999





CROSS LIGHT

DESIGN BY GRAVEN IMAGES





CHASM

by One Foot Taller 1999





RAVINE

by One Foot Taller 1999



contact: ANDREW@ANDREWHARROLD.COM

Egg Chaise designed by FUTURE SYSTEMS 2003

FS356- CHAISE LONGUE CM L130, D56, H70

FRAME:
polyethelyne

UPHOLSTERY:
Leather: Muirheads

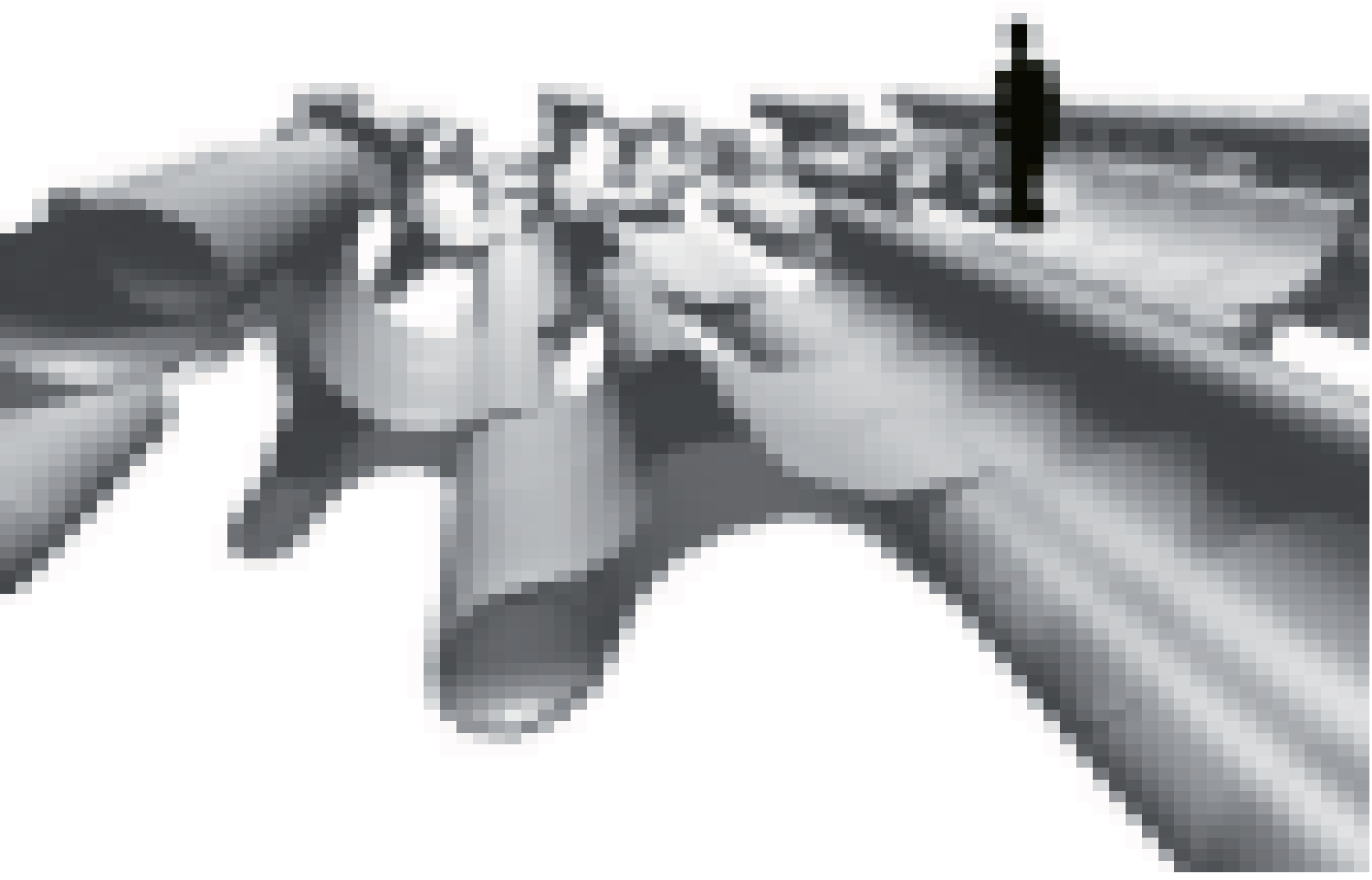
Bute:TIREE

Customers Own Material, 6m



EGG CHAISE

by FUTURESYSTEMS 2003



contact: ANDREW@ANDREWHARROLD.COM

LIGHTBEAM

design andrew harrold





DEALER